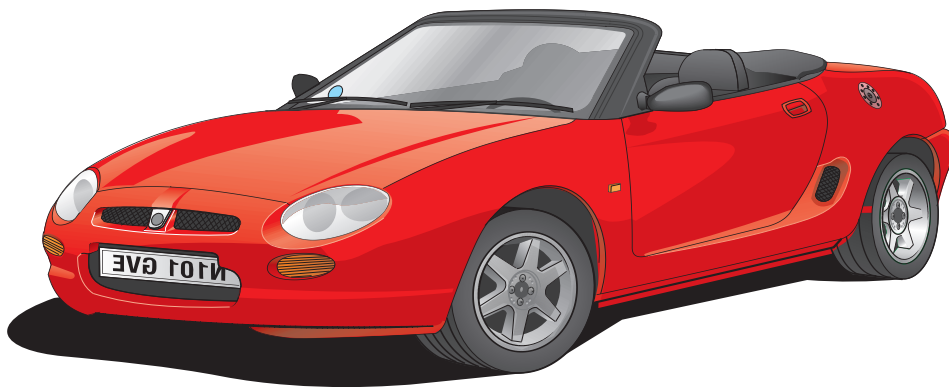


Teen Drivers

www.ateendrivers.ca

STUDENT ACTIVITY GUIDE



905-593-8338

TABLE OF CONTENTS

TABLE OF CONTENTS 1

Introduction 2

 Driver Behaviour..... 2

 The Workbook 2

Teen Driving..... 2

Scenario 1 3

Scenario 2..... 3

Scenario 3..... 3

Scenario 4 3

Scenario 5..... 3

Scenario 6..... 3

Scenario 7 4

Scenario 8..... 4

Scenario 9..... 4

Scenario 10..... 4

Scenario 11..... 4

Scenario 12..... 4

INSTRUMENT CLUSTER..... 5

CAR MAINTENANCE 5

 Markings 6

 Stopping Positions 6

 Outside Circle Check 6

 Scenario 13..... 7

 Scenario 14..... 7

 You are driving 100 km on a freeway. 7

 Under the Hood..... 7

 Assignment 1 8

 Assignment 2 - Drinking & Driving 8

 Assignment 3 – Distractions 8

 Learning the ABC’s of Driving..... 9

Introduction

Welcome to your beginner driver education course.

Learning to drive is a very exciting time for you. It is a long awaited rite of passage that means independence. Parents become very anxious about their teens behind the wheel. Once you have achieved your G2 licence, you no longer need a licenced driver to accompany you.

The goal of the BDE Curriculum is to:

- Enhance road safety for all road-users;
- Improve the driving competency of beginner drivers;
- Help beginner drivers develop respectful and responsible attitudes toward driving that contribute to the safety of all road users;
- Enhance driver mobility by helping beginner drivers to drive in a confident and safe manner whenever they need to drive;

Driver Behaviour

Our goal is: *Driver Behaviour: To develop knowledge, appreciation, and skills related to driver behaviour and how it contributes to safe and responsible driving for life long learning.*

The Workbook

In accordance with the MTO, Completion of this workbook is a mandatory requirement of the BDE program. Complete this workbook and return it to your in-class or in-car instructor. Credit for course completion cannot be issued until a completed workbook has been submitted.

If the required workbook activities are not completed in a satisfactory manner, you will be contacted and an incomplete grade will be assigned until a satisfactory completion has been submitted.

If you lose this book, it will cost you \$5 for a replacement and you will need to start over. Keep it safe.

The information can be obtained directly from the classroom or you can access the Driver Handbook. Other resources available: newspaper/magazine act, Highway Traffic Act and related legislation, in-class presentations, internet, first hand experiences, televised programs/newscasts and surveys.

Completion of this workbook is a mandatory part of the curriculum for this course. Completion can not be issued until this is returned completed. If any part is uncompleted, you will be contacted and your course will not be considered completed.

Teen Driving

The first year of driving is a high-risk period due to inexperience and lack of skill. Students need as much practice time as possible. Don't take for granted that you know how to drive after a few lessons with your instructor.

If you were enrolled in piano lessons, would you expect that you could play a concert after ten lessons and no practice?

Increased skill may lead to over confidence. Safe driving is seeing what needs to be seen and making good decisions.

It is important to evaluate your readiness to take on the responsibility of driving. Each person has a different maturity level and ability. Do not rush if you are not comfortable.

Once you have successfully passed your G1 Road Test, you are ready for the road, alone!

Be prepared.

Bad Habits to watch for:

- Forgetting to signal
- Sloppy turns
- Following too closely
- Not checking blind spot
- Not turning head when backing up
- Accelerating through amber lights

Scenario 1

At dusk, Caroline and Rob stop behind several cars at a light. They're in a left-turn-only lane, so Caroline doesn't switch on her blinker. And since it's not completely dark, she hasn't turned on her car lights. By the time Caroline's car reaches the intersection, the stop light has been yellow for a few seconds. Caroline decides to turn left. Seconds later a truck slams into the passenger side of Caroline's car.

Describe two or three things Caroline should've done differently.

Scenario 2

Rob picks up four of his friends every morning before school. There aren't enough seat belts for everyone, so the people in the backseat never buckle up. As Rob drives toward school, he leans over to turn on the radio. The car veers off the road.

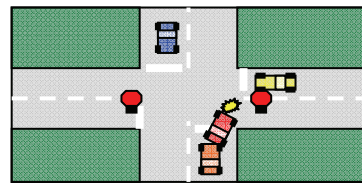
- Identify the distraction that prevented Rob from driving safely.
- What do you think happened?
- List safety precautions that the group should have taken.

Scenario 3

Travis wants to see how fast his parents' old SUV can go. It's a foggy morning, but the road he's on is deserted, so he figures it's safe. Travis is going 100 km/hr when the deer appears out of nowhere. Travis slams on the brakes, but he isn't able to stop or turn quickly. He hits the deer and slams his head against the steering wheel because of the impact.

- Why couldn't Travis stop quickly enough to avoid the deer?
- Why couldn't he steer around the deer?

Scenario 4



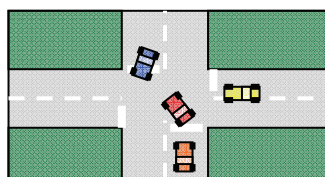
Anne is approaching an intersection with a stop sign. She has a car in front of her. The car starts to make a right turn and suddenly stops. Anne smashes

into the car.

How could have Anne prevented this collision?

What rule of defensive driving did she not use?

Scenario 5



situation?

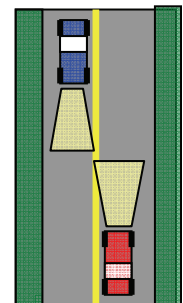
Study this left-hand turn.

- Identify the potential hazard.
- How do you avoid a possible collision in this

Scenario 6

You're driving 80km in a rural area late at night. Your lights are on high beams. You see a car coming towards you.

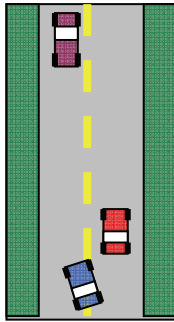
- At what point do you switch to low beams?
- Give examples of other situations while driving at night that would cause you to flash your high beams.



Scenario 7

You are in a car driving on a 2 Lane Hwy.
 A car pulls over to pass you.
 Up ahead, you see a car coming.

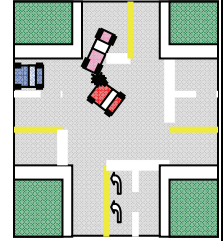
1. What should you do in this situation?
2. What three questions should you ask yourself before passing on a 2 Lane Hwy to avoid a potential head-on collision?



Scenario 8

You're in the left turning lane, with a car in front of you. The car makes a left-hand turn and goes into the right lane. You follow the vehicle into the right lane. As you are entering the right hand lane another oncoming vehicle turns right at the intersection and a collision occurs.

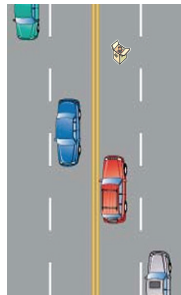
- a. What is the proper lane you should turn into?
- b. Give reasons why the car ahead of you turned into the right lane.



Scenario 9

You're driving on a 4-lane highway. You see a large box ahead of you in your lane. You're in the left lane. There are three choices of action to avoid a hazard.

1. What are they?
2. Which one would you have used in this case?
3. What rule of defensive driving do you use to avoid this potential collision?



Scenario 10

You are approaching a controlled intersection with stop signs

What are 2 things you should identify before reaching the stop?

- 1.
- 2.

Scenario 11

You are driving on a 2 lane highway. Up ahead, a police officer has someone pulled over on the right shoulder.

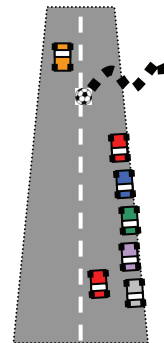
By law, what 2 options do you have?

- 1.
- 2.

Scenario 12

















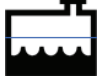



You're driving in a city. There are no cars moving. Up ahead you see a ball roll into the middle of the street.

1. What be the first course of action?
2. Why?
3. How far should your line of sight be?
4. What type of vision should you be using?
5. How far wide should your vision extend?



INSTRUMENT CLUSTER

In the space provided, name the warning lights

				
A	B	C	D	E
				
F	G	H	I	J
				
K	L	M	N	O
				 Defrost
P	Q	R	S	T

CAR MAINTENANCE

How often?


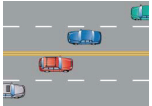



In the space provided, match the maintenance with how often it should be performed

A	Antifreeze/coolant
B	Belts and Hoses
C	Transmission Fluid
D	Oil Level
E	Air Filter
F	Brake Fluid
G	Windshield Washer Fluid
H	Battery
I	Power Steering Fluid
J	Windshield Wiper Blades
K	Lights
L	Change Oil

1	Monthly
2	Daily
3	Whenever you clean your windshield
4	Monthly
5	Every oil change
6	Keep reservoir full
7	Every fill-up
8	Monthly
9	Every other month
10	Every 3 months or 3,000km
11	Monthly
12	Weekly

Markings

In the space provided, write a description of what the road marking do and do not permit.

A	
B	
C	
D	
E	

Stopping Positions

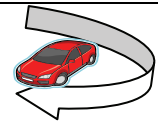
Good drivers see stops ahead, begin braking and stop smoothly.

You must come to a complete stop at all stop signs and red traffic lights.

What are the 4 stop positions?

- 1.
- 2.
- 3.
- 4.

Outside Circle Check



Before entering your car there are certain things you should be looking for. This is called a circle check. There are five visual checks you will need to do before entering the car.

They are:

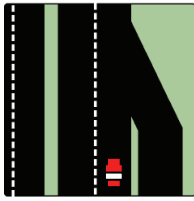
1. look under the vehicle for leaks
2. make sure there are no objects that will obstruct your path of travel
3. make sure there has been no vandalism to the vehicle
4. make sure the tires are in good condition
5. make sure all lights, mirrors and windows are clean

Now that you know the five points to a circle check, we will summarize it with the five "F"s. This will make it easier for you to remember for future reference.

Convert each of the checks to one word beginning with "F"
Fill in the blanks to make a list of the five F's

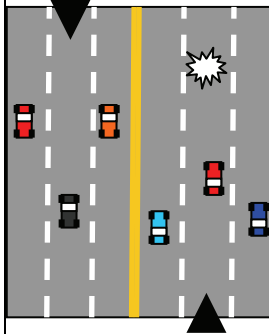
1. F _ _ _ _ _
2. F _ _ _ _ _
3. F _ _ _ _ _
4. F _ _ _ _
5. F _ _ _ _

Scenario 13



You are driving in the right lane on an expressway. Up ahead on the right is an entrance ramp. Before you reach the ramp, what should you do? Why?

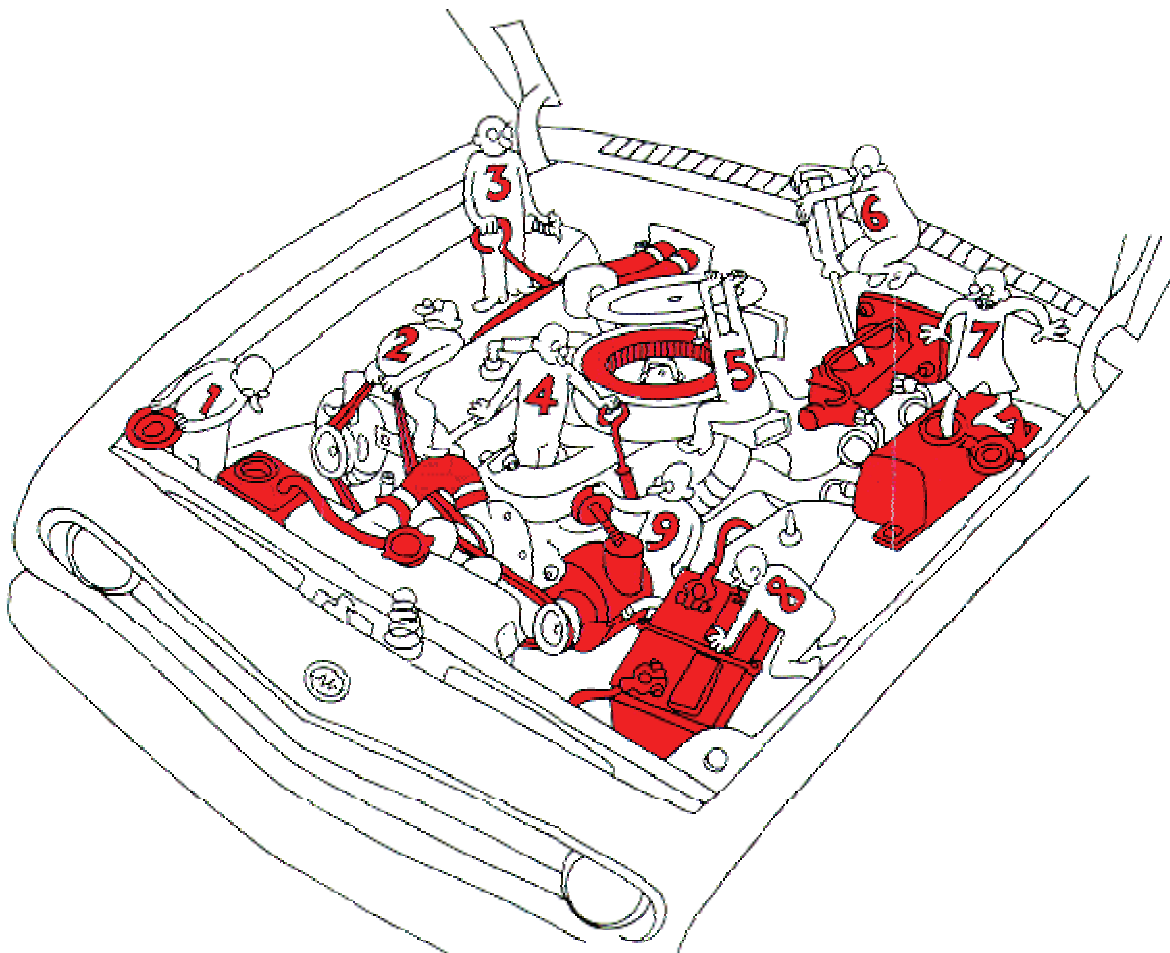
Scenario 14



You are driving 100 km on a freeway. You see ice on the road ahead.

What should you do? How would you handle this if someone is tailgating?

Under the Hood



Assignment 1

Find a newspaper article about driving, collisions or changes in regulations.
(for online info, you can visit www.thespec.com and do a quick search)
Attach a copy of the clipping.

Write a summary about the article.

Was it a collision?
Who was involved?
Were there any injuries or fatalities?
What was the cause?
How are the lives of those involved likely to be changed?
What will be the consequences?
What could have or should have been done to avoid the collision?

Is it a change in regulation?
Will it affect you?
How will it affect you?
How do you see yourself now, as a member of the driving community?

Assignment 2 - Drinking & Driving

Do any two of the following:

- Write a eulogy about a close friend who has been killed in a drinking and driving collision. The friend was either:
 - The drinking driver
 - A passenger of a drinking driver
 - Sober driver in another car
- Write about what life would be like after being injured in a drinking and driving collision. How would present lifestyle and future goals be impacted or changed? What type of injury; paralyzed, head injured or disfigured from burns or cuts.
- Write a “time capsule” letter that expresses what you would have wanted to do with your life and what you would want to say to friends, family and others, if you died in a drinking and driving collision.
- Write an article for the school newspaper about a friend who was killed in a drinking and driving collision.

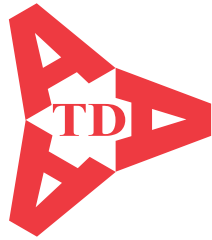
Assignment 3 – Distractions

List at least 6 different driver distractions which you have witnessed. Give details of each and suggest how the driver should have handled each situation differently so as not to interfere with the task of driving.

Learning the ABC's of Driving

1. Directional Change
 - a. Types – lane change, turning left or right, 3-point, u-turn, pulling in or out
 - b. Mirrors, Signal, Blind Spot
 - i. Does it matter in what order? Yes, you always need to be in control of your driving. For example: you look in the mirror and can speed up or slow down if there is a car in your blind spot. If you signal first, the driver in your blind spot will slow down or speed up to determine what you will do.
 - ii. Difference between “looking” in the mirror and “seeing” in the mirror
 2. Two Rules of Driving
 - a. Don't be intimidated
 - i. Be your own person
 - ii. Independent having discipline and confidence Example: someone blowing their horn at you from behind or tailgating you. The horn is better used to get someone's attention if they are daydreaming and miss a changed light
 - b. Don't follow the behaviour of the person in front of you; follow your own choice of action. Example: if the car in front of you rolls through a stop sign, will you?
 3. Being Responsible
 - a. Predictable
 - b. Courteous
 - c. Artful
 4. Controlling Momentum – Three mechanical things in the car that will control momentum
 - a. Gas
 - b. Brake
 - c. Steering
 5. Taking a Short Trip
 - a. Route – do you have a plan B? Side streets, one way vs. two way, landmarks
 - b. Time of day – rush hour vs. middle of the day or late evening
 - c. Conditions – weather , construction tie ups
 6. Rounding a curve or Bend – slow going in, hold during, go getting out
 - a. Slow
 - b. Hold
 - c. Go
 7. Force of Impact – what effects force of impact
 - a. Speed
 - b. Weight
 - c. Object (what gives)
- | | | |
|---------------|---------------|------------------|
| Decide | React | Braking Distance |
| $\frac{3}{4}$ | $\frac{3}{4}$ | 2.5 seconds |
8. Three stages of Braking
 - a. Identify – decide there is a situation $\frac{3}{4}$ of a second
 - b. Reaction – move foot off gas to brake $\frac{3}{4}$ of a second
 - c. Braking distance – will change depending on the speed

How long will each stage take?
 How long should following distance be? At 50km/hr – what happens at 100km/hr?
 9. Three questions to ask yourself when passing on a single lane Road
 - a. Is it safe? – road markings can help you determine if it safe
 - b. Do I have time (enough space)?
 - c. Is it really necessary (matter of life or death)?
 10. ABC's of Defensive driving
 - a. Eyes – looking efficiently
 - b. Space Cushion
 - c. Communication



Teen Drivers

www.ateendrivers.ca

905-593-8338

2 Locations

Mississauga North

1965 Britannia Rd. West
Suite 204
Mississauga, On L5M4Y4

Mississauga South

2155 Leanne Blvd.
Suite 114
Mississauga, On L5K 2K8